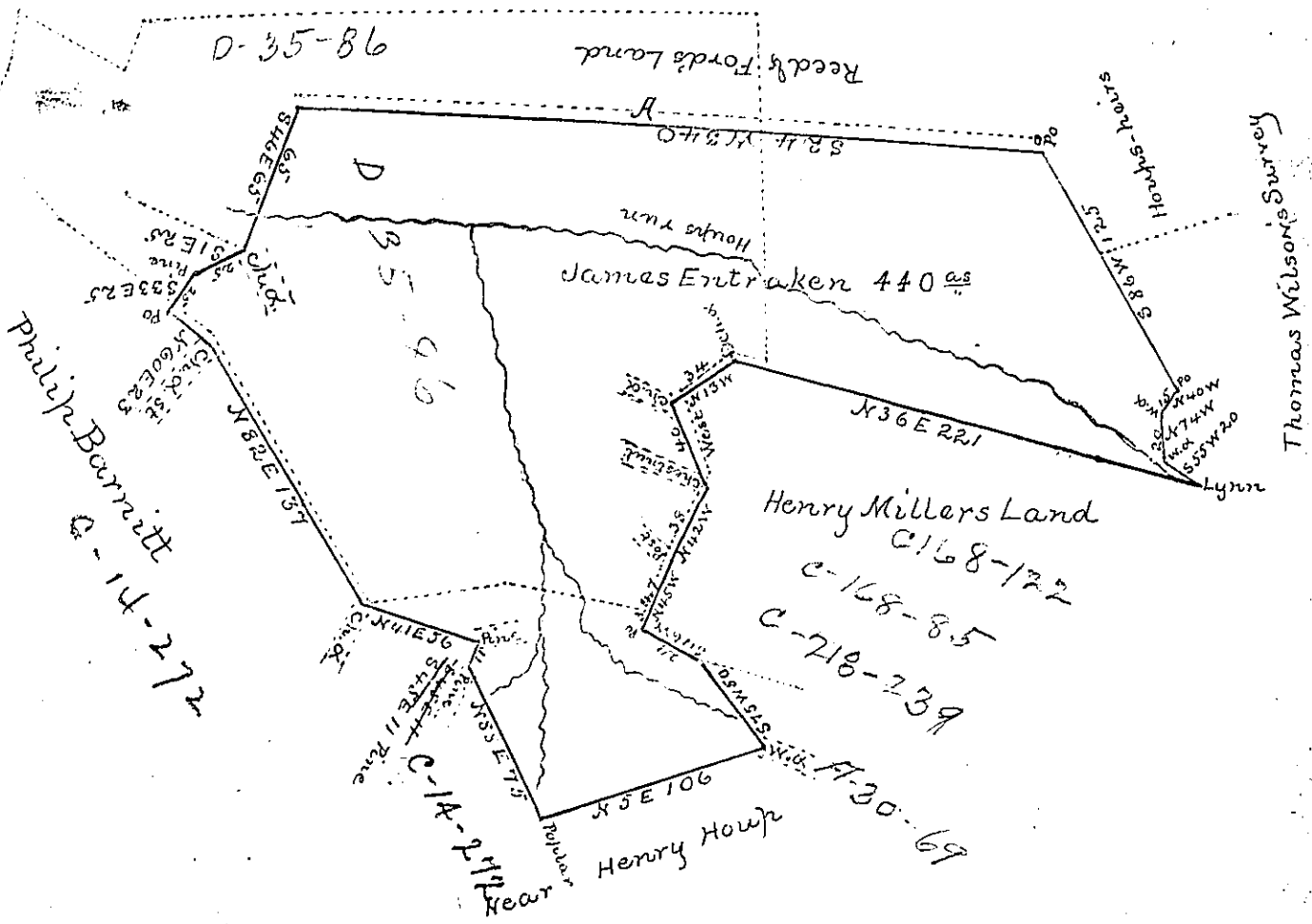


N.B. The dotted lines represent a survey made for the heirs of John Savage Dec 15th 1847 pursuant in the name of George Tracy in pursuance of an order of summary granted to the trustees & partners of the big estate of John Savage the 6th day of October 1835 who claim against the above return
Saml Caldwell



Situate in Todd Township Huntingdon County
containing four hundred forty acres & the usual allowance
of 6 pct for roads &c. Survey'd ^{September the 6th 1847} ~~November the 4th 1847~~ In pursuance
of a warrant granted to James Entaken for four hundred
acres dated the 29th day of May 1847 - Int from 19th March 1820.

John Laporte Esqr. S. G.

Saml Caldwell D. G.

N.B. the piece at A is thrown out the survey being too large
when first made
S. G.

J. M. Wm

IN TESTIMONY that the above is a copy of the original remaining on file in the
Department of Internal Affairs of Pennsylvania, made con-
formably to an Act of Assembly approved the 16th day of
February, 1833, I have hereunto set my Hand and caused
the Seal of said Department to be affixed at Harrisburg, this

third day of January 1878

J. Simpson Africa,
Secretary of Internal Affairs